

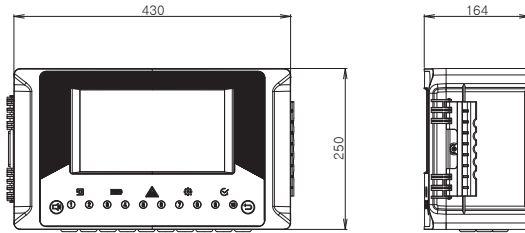
ASC-100 Safety Controller

| Up to 10 channels of gas detector monitoring (4 ~ 20mA detection and 24V supply) | Expansion of additional 10 channels when using extension unit (monitoring up to 20 channels) | Relay, 4 ~ 20mA output function Individual module configuration | 10.1" touch screen with wide viewing angle and multi-language support | Intuitive user interface and alarm system configuration | Detector position and alarm status can be displayed using map monitoring mode | Detection channel log function and various event storage function | Material safety data sheet (MSDS) viewer for sensing gas | High output buzzer and user voice alarm function according to alarm occurrence | Various external interfaces such as TCP / IP and MODBUS | Provides earthquake alarm detection function (intensity 3 ~ 7) | Robust case construction and IP65 waterproof / dustproof |

IMAGE



DIMENSION (Unit : mm)

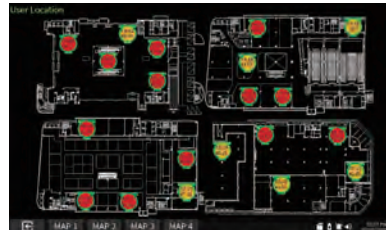


ACCESSORIES

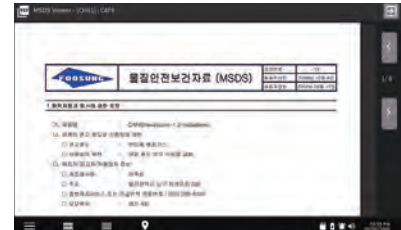


Expansion Unit

MONITOR IMAGE



Map Viewer Function



MSDS Viewer Function

SPECIFICATION

※ Specifications are subject to be changed without prior notice.

Model	ASC(AEGIS Safety Controller)-100	Wall Mount Type
Capacity	Up to 10Channels with Base Unit, up to 20Channels with Expansion Unit	
Size	430mm x 240mm x 150mm	(WxHxD)
Weight	Max 8.5Kg	
Housing Material	ABS PC	
Display	10.1" Touch Screen (Resistive Type)	
Language	Korean, English, Chinese.	
Visual Indicators	5 System LED(Power, Battery, Alarm, Service, Status) 3 Led for each channel. (Green:Normal/ Yellow:Fault/Red:Alarm)	
Audible Alarm	90dB(@1m) Piezo Buzzer (Alarm), 2W Speaker (Voice Guidance/Alarm)	
Button	Operating Reset / Alarm Mute	
4-20mA Input	4-20mA DC (2-wire or 3-wire) Up to 10Channel with Base Unit, up to 20Channel with Expansion Unit	
Relay Output	AC250V 5A, , DC30V 5A relay contact (SPDT) Up to 20Channel with Base Unit, up to 40Channel with Expansion Unit	

Model	ASC(AEGIS Safety Controller)-100	Wall Mount Type
4-20mA Output	4-20mA DC (2-wire) Up to 10Channel with Base Unit, up to 20Channel with Expansion Unit	
Operating temperature	-10℃ ~ +55℃	
Operating humidity	5 ~ 95% RH	
IP Grade	IP65	
AC Power	AC 110/220 V 50 - 60 Hz ± 6% / Max 150W	
DC Power	DC 18 - 32 V(Normal DC 24V) / Max 150W	
Backup Battery	21.8V/5100mAh Lithium Ion Battery (>30minutes for typical System)	Optional
External Interface	TCP/IP, MODBUS	
Logging	Logged Event & Data	
Setup Tools	WinApp Program	
Others	Earthquake Sensor	Optional

CERTIFICATION

CE

Refer to website